

The Belfast Agenda

Community Planning Partnership

Black Mountain Shared Space
28 November 2024



I. Welcome

**John Walsh, Chief Executive – Belfast City Council
and Chair of the Community Planning Partnership**

Agenda Item	Lead	Time
1. Welcome	John Walsh	14:00
2. Refreshed Governance Arrangements and Collective Leadership Focus	John Tully	14:10
3. Board and Highlight updates	Chairs	14:20
4. Work Commissioned on behalf of the CPP		
4.1. Review of VCSE Sectoral Advisory Panel	John Tully	15:20
4.2 Co-design Framework Update and Discussion	Irene Sherry	15:25
5. Forward Meeting Schedule and Close	John Walsh	15:50

2. Refreshed Governance Arrangement and Collective Leadership focus

John Tully, Director of City & Organisational Strategy
Belfast City Council

Refreshed Belfast Agenda (2024-28)



Our focus for the next four years



KEY

Theme 1: Our people and communities – Making life better for all our residents

Theme 2: Our Economy – Creating inclusive, innovative and sustainable growth, learning and opportunity

Theme 3: Our Place – Creating a liveable and connected, vibrant and competitive city

Theme 4: Our Environment – Creating a net-zero emissions and climate-resilient city

Theme 5: Compassionate City - Leaving no one behind – making Belfast a welcoming, caring, fair and inclusive city.



Scale of ambition

- Five Strategic Themes
- Foundations for success – foundational programmes and investments which will drive the city forward.
- 15 Priorities – why for Belfast?
- 100+ strategic intentions/ collaborative actions across the priorities
- Success to create real progress towards achieving our vision - outcome and impact focused

Belfast Agenda – Governance Structure



Boards accountable for ownership & delivery of Belfast Agenda Action Plans below

Health Inequalities	Educational Inequalities	Housing-Led Regeneration	Re-naturing city & increasing resilience to climate
Community & N/Hood Regeneration	Jobs & Skills	Connectivity, active and sustainable travel	Creating a sustainable circular economy
Older People	Sustainable & Inclusive Economic Growth	Future City Centre and wider regeneration & investment	Innovating to Net Zero
Children & Young People			
Inclusive Growth & Anti - Poverty			
Good Relations & Shared Future			

Shared leadership focus

Specific deliverables that are:

- ✓ **Urgent/of critical importance** for the City
- ✓ Can only be delivered through **multi – agency collaboration**
- ✓ A **partnership delivery approach** can improve scale and pace of outcomes
- ✓ **We can produce tangible and multiple impacts** in short, medium and long terms



Bringing focus: distributed leadership & delivery clusters



Our Aims:

- Bring immediate focus on several transformative and high-impact priorities.
- CEO-level City Leadership Group focused on these priority areas.
- Ongoing focus on delivery from partners with the key mandates, responsibilities, levers, resources.
- Distributed leadership roles across the partnership.
- Community and Voluntary Sector and BAPS / CVS sector involved in all priorities.
- Engagement with other partners and Government leads to align with Programme for Government and remove barriers where needed.

3. Board and Highlight updates on behalf of BA Delivery Boards

John Tully, Director of City & Organisational Strategy
Belfast City Council

The Belfast Agenda

Our People and Communities Board

Bryan Nelson



Strategic Leadership Group

- Executive level representation of key partners which have statutory responsibility and resource decisions.
- Strategic oversight and point of escalation
- Meet quarterly (or as may be required)

Community Planning Partnership

Strategic Partnership, meets bi-annually

- Standing agenda item for discussion / assurance
- Point of escalation through Co-Chairs & PMO



Strategic Areas of Focus

Complex Lives

Children & Families Seamless Pathway

MASH

Place based Community Plans

WSA to Obesity



Key Workstreams

- ✓ **Addressing chronic homelessness & supporting vulnerable people**
- ✓ **Promoting positive mental health & emotional wellbeing**
- ✓ **Increasing physical activity & tackling obesity**
- ✓ **Developing place-based community plans**
- ✓ **Strengthening civic voice & participation**
- ✓ **Inclusive growth & anti-poverty initiatives**
- ✓ **Good relations & shared future**
- ✓ **Support for children & young people**
- ✓ **Support for older people**

Key milestones achieved

Addressing chronic homelessness & supporting vulnerable people

Supported 141 Individuals with complex needs through the Complex Lives Multi-Agency Model

Inclusive growth & anti-poverty initiatives

Delivery of the £1m Hardship Programme, supporting over 42k people and secured £750k for 21 SSM's

Promoting positive mental health & emotional wellbeing

Take 5 approach initiated across key settings (community, schools, workplaces) & funding secured

Support for children & young people

Blueprint developed for Children & Young People's Seamless Pathway

Developing place-based community plans

Development of Multi-Agency Action Plan for Wider University & Lower Ormeau

Key milestones to be achieved by next quarter

Addressing chronic homelessness & supporting vulnerable people

Development of an outcomes framework for Complex Lives

Inclusive growth & anti-poverty initiatives

Funding framework for Hardship Programme to be agreed & Cost-of-living networking event to be held in Oct

Promoting positive mental health & emotional wellbeing

Recruitment of Take 5 Programme Coordinator.

Developing place-based community plans

Reach consensus on how to take forward the development of area-based community plans

Developing place-based community plans

Secure resourcing of WU&LO Area Intervention Manager

Seamless Pathway for Children and Families

Community Planning Partnership

28 November 2024

Seamless Pathway Blueprint

- The Belfast Area Outcomes Group has produced a blueprint for a seamless pathway for Belfast children aged 0 - 8 – named 'The Belfast Child'
- The aim is to create highly joined - up, localised, cross sector delivery at each key stage of a child's development journey
- This will be a Whole Child, Whole Family, Whole Community, Whole System model

Stages of the Journey 0-8



Ante Natal



Belfast Baby
(infancy)



Belfast
Toddler (pre -
school)

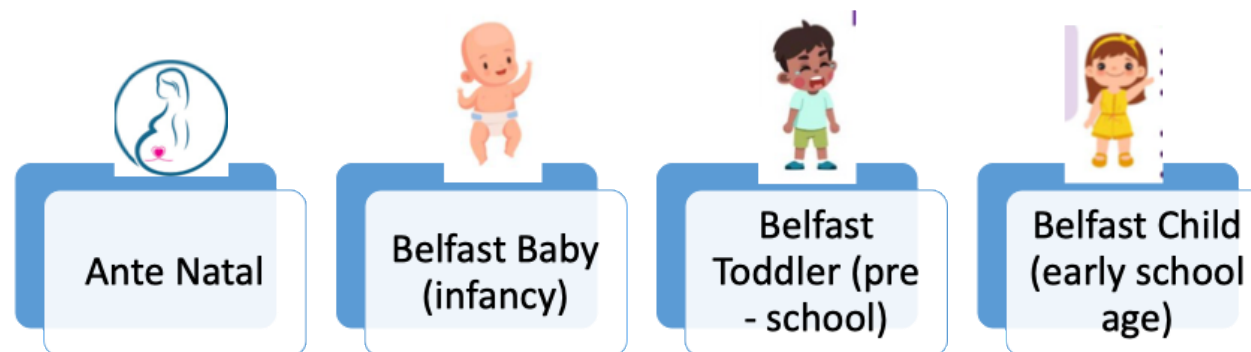


Belfast Child
(early school
age)

Belfast Child will make us strong at key risk and transition points at each stage of the journey

The Blueprint sets out for each stage:

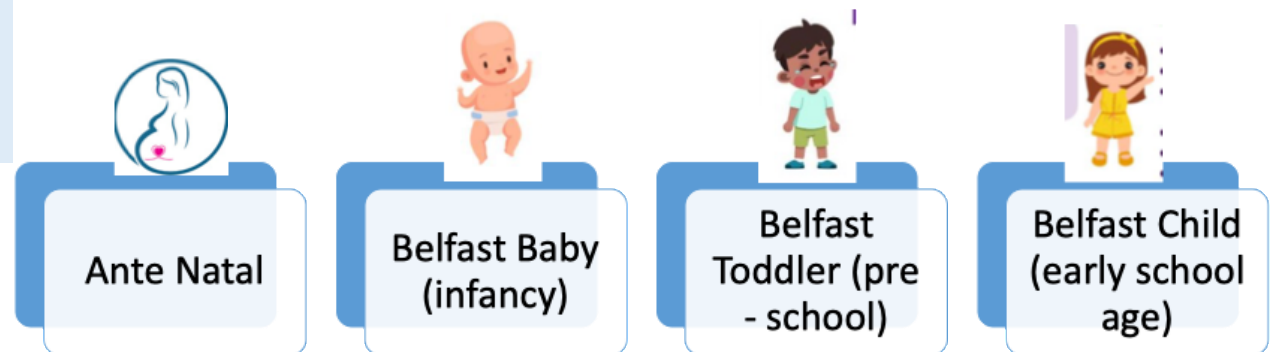
- The child's experience
- The families and carers experience
- The risky moments in the journey and how we will work together at these points
- How we can join up to support our most at risk children, families and communities



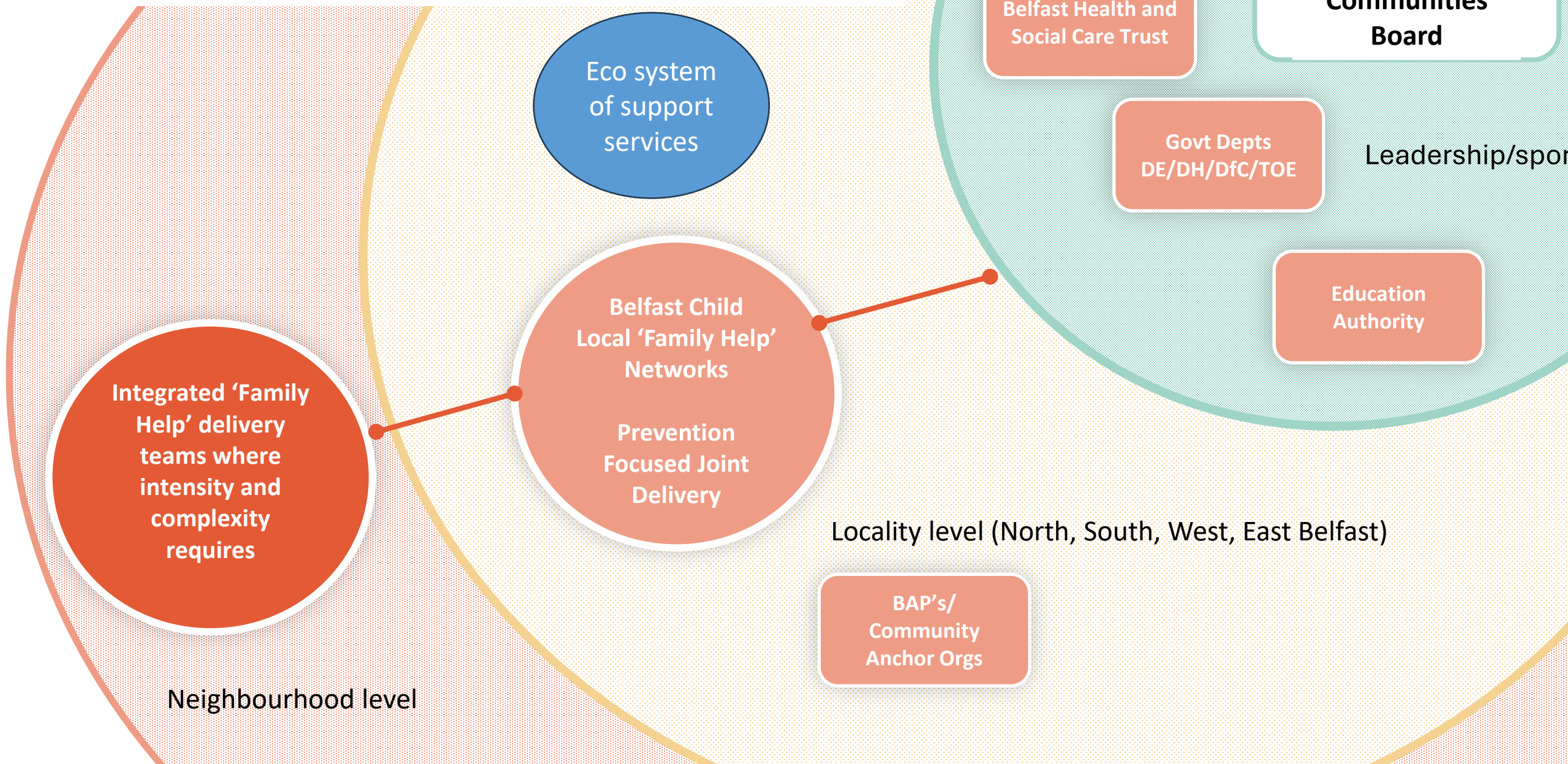
Key delivery features and system enablers

- A first focus on building the assets, understanding and confidence of parents, families and communities
- Locally co - ordinated networks of delivery organisations across sectors and public service areas
- An eco - system of support services which will adapt to suit local needs over time through direct links to commissioning activity.

- Multi - disciplinary delivery at local level, bringing social care teams, other public services and key community and voluntary organisations together, to respond to specific local challenges
- Enabling measures in a whole system, continuously improving approach e.g. data sharing, skills building



The Belfast Child: key delivery features – in a picture



Whole Systems Approach towards Obesity



The Belfast Agenda

Strategic plan

2024 - 2028

Implementing a whole system approach to diet and healthy weight in Northern Ireland

David Tumilty

**Health and Social Wellbeing Improvement Senior Manager
(Belfast & South Eastern Area)**

**PHA Lead for Obesity Prevention, Physical Activity and Active
Travel**

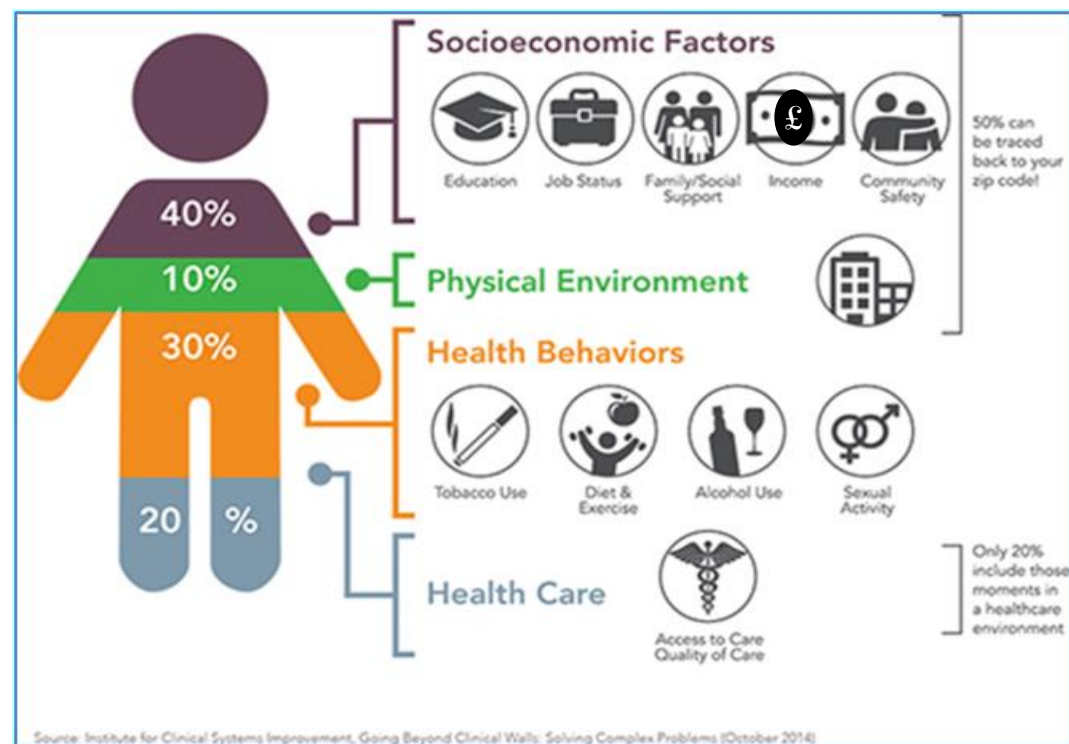
28 November 2024



Health

- There is room for improvement in our health
- Deprived communities have worse health and life expectancy
- All the main causes of inequality and premature death are preventable to significant degree
- Major risk factors
 - Smoking
 - Obesity (diet and physical activity)**
 - Alcohol
 - Mental health
- **Wider determinants (especially income inequality) hugely important**

What Determines Health



Statistics

Living with Overweight / Obesity

- 22% of children
- 65% of adults

Physical Inactivity

- 45% of adults
- 87.3% of children

Health inequalities

- People living in the most deprived areas of NI are more likely to live with obesity (32%) / and less likely to take PA (56%) compared to those living in the least deprived areas (27% and 37% respectively).



Whole System Approach

A WSA to diet and healthy weight shifts the focus away from individuals as points of intervention as per traditional intervention programmes, and puts an emphasis on improving the ‘**systems**’ within which people are born, grow, live, work and age. Moreover, a WSA provides a strong rationale for governments and policymakers to pursue **multi-sectoral partnerships to leverage** the strengths and resources of a diverse range of actors who have wide influence over and within the systems that influence diet and healthy weight.



Public Health
Agency

Improving Your Health and Wellbeing



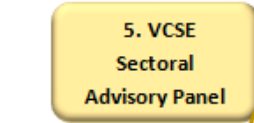


**Governance
Structure:
Whole Systems
Approach
(WSA)**

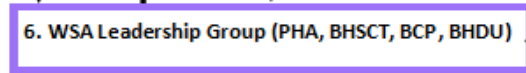
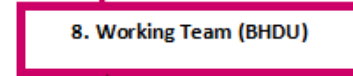
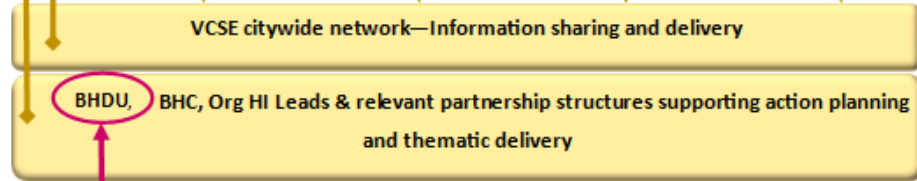
Regional Structure (ROPIG)
Informs, does not dictate local



Local-Belfast



See page 2 *



Phase 2: Building the Local Picture

- Local Area Profile
- Action Mapping
- Asset Mapping (& Hazards)
- Strategy Mapping
- Network Analysis



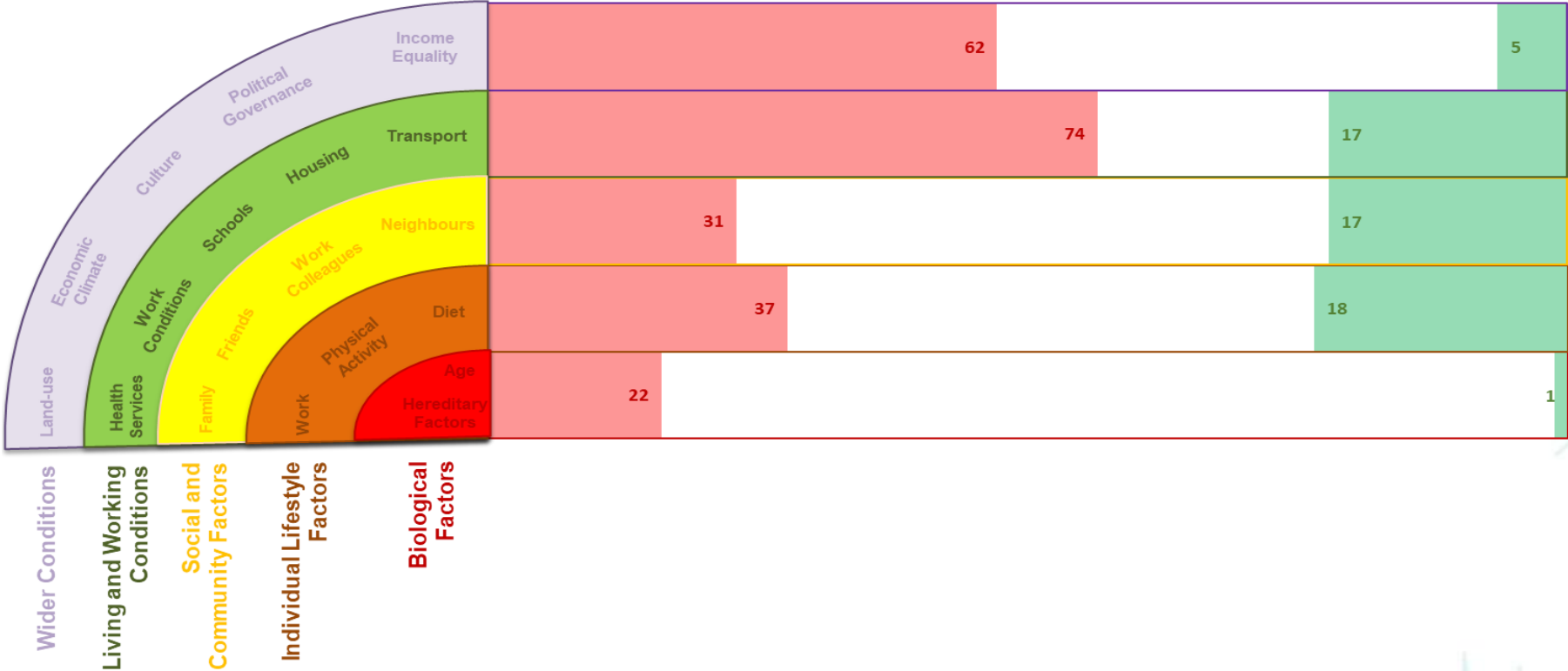


Obesity, physical activity and
nutrition statistics:
Area profile for Belfast City
Council area

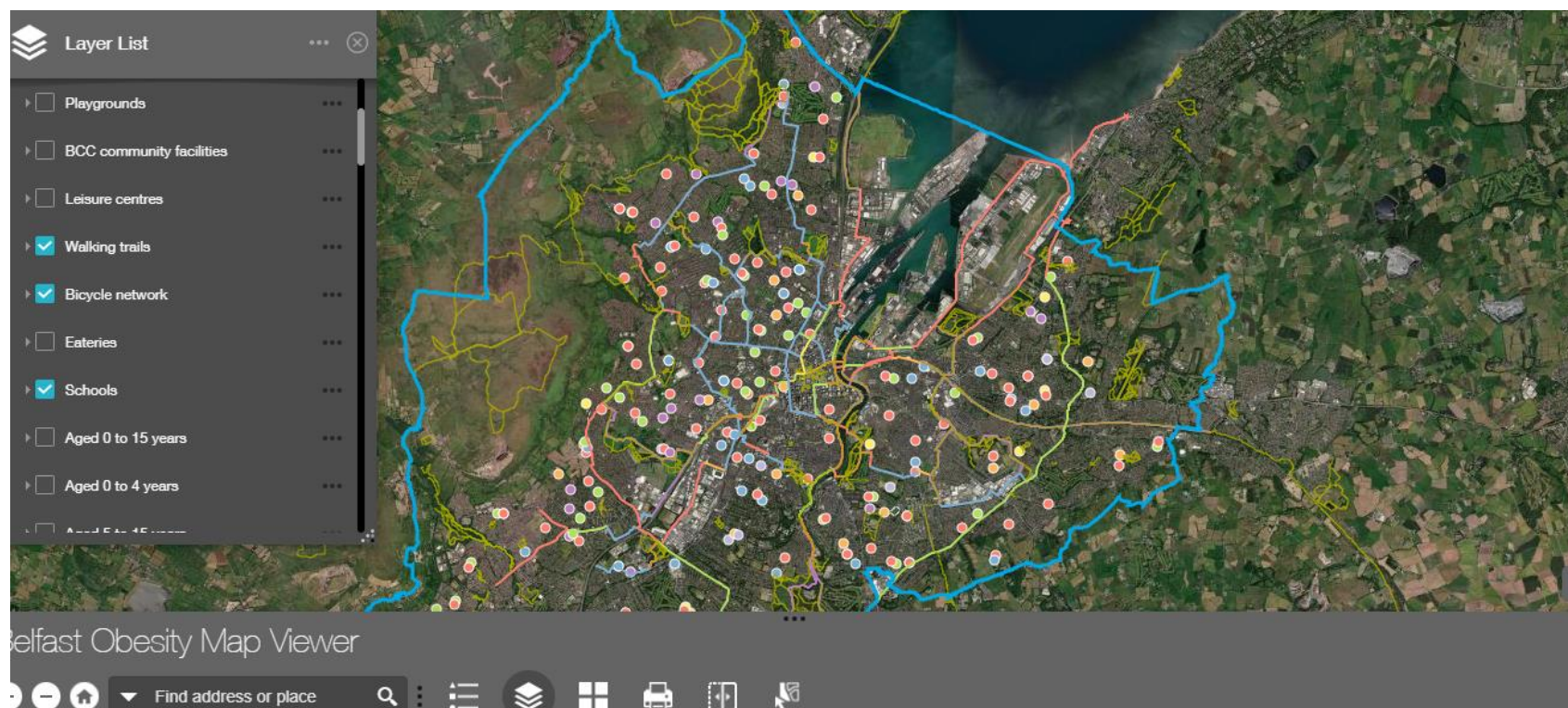
April 2024

Elaine Wilmot & Áine Hagan
Health Intelligence Unit, PHA

Belfast Identified Mapped Actions – 54 Actions



ARC GIS – Asset Mapping



Strategy Mapping - Government Departments and WSA Obesity

Biological		<u>Department for Communities</u>	<u>Department of Education</u>	<u>Department for Infrastructure</u>
Individual lifestyle	<u>DAERA</u>	<u>Department for Communities</u>	<u>Department of Education</u>	<u>Department for Infrastructure</u>
Social and community		<u>Department for Communities</u>	<u>Department of Education</u>	<u>Department for Infrastructure</u>
Living and working conditions	<u>DAERA</u>		<u>Department of Education</u>	<u>Department for Infrastructure</u>
Wider conditions	<u>DAERA</u>	<u>Department for Communities</u>	<u>Department of Education</u>	<u>Department for Infrastructure</u>

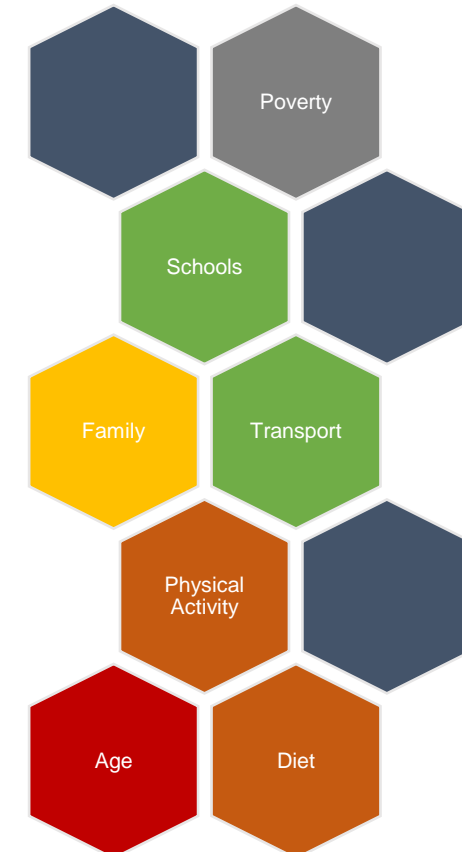
Note: [Department of Health](#) cuts across all themes

Click to return to Dahlgren model



Department of Education

Strategy (published date)	Vision	Links to obesity
Children and Young people's strategy 2020 – 2030 (2020)	Working together to improve the well-being of children and young people living in Northern Ireland and to achieve positive, long-lasting outcomes.	<ul style="list-style-type: none"> • Defines outcomes (page 27): • Children and young people enjoy play and leisure; consider ways in which children from families living in poverty can access play, recreational and other activities (page 47) • Children and young people are physically and mentally healthy; encourage a healthy diet (page 35) and continue to reduce childhood obesity (page 36) • Children and young people experience a) economic and b) environmental well-being; provide opportunities for them to access and interact with the natural environment at home, in school and in daily activities (page 75)
Every CHILD. Department of Education's Corporate Plan 2023-2028 (2023)	Every child and young person is happy, learning and succeeding.	<ul style="list-style-type: none"> • Promote active lifestyles and healthy eating, including the implementation of revised nutritional standards for school food (page 13) • Contribute to tackling climate change through the curriculum, development of the school estate and school transport (page 15)



Click to
return to
WSA
Overview

Next Steps

- Phase 3: Systems Mapping
Co-production & Co-design
- Phase 4: Action Planning
Resourcing



Key points

- Wider determinants of health – everyone's business
- This is about systems change
- Important that we engage with each of the 4 community planning boards to ensure obesity is on the agenda and have a two-way mechanism to communicate and create buy in and collaborative gain.
- Needs to be on the agenda of the overarching community planning partnership board
- We want to engage VCSE through the VCSE panel representatives on the People and Communities Board.
- If you would like to find out more and get involved, please let us know.



Thank you

David.tumilty@hscni.net

02895 361680





The Belfast Agenda

Our Economy Board

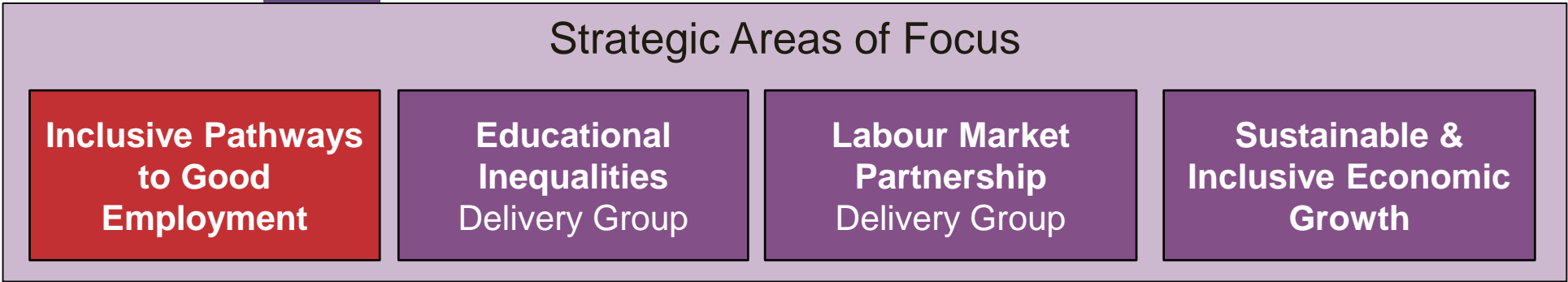
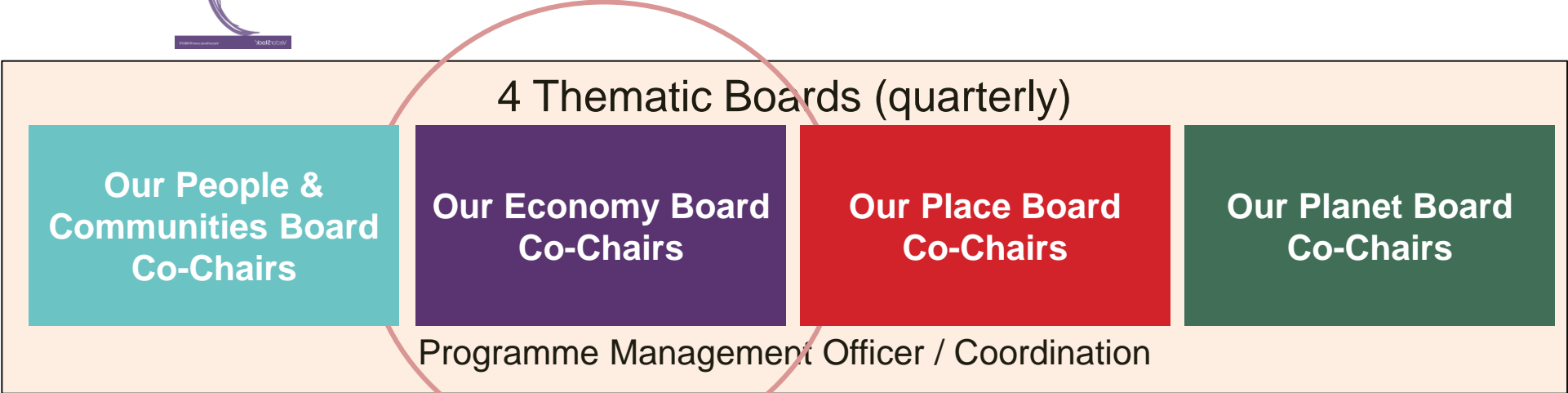
Damien Martin



Community Planning Partnership

Strategic Partnership, meets bi-annually

- Standing agenda item for discussion / assurance
- Point of escalation through Co-Chairs & PMO



A large purple circular arrow graphic surrounds the text "Key Workstreams".

Key Workstreams

- ✓ Educational Inequalities
- ✓ Inclusive Pathways to Good Employment
- ✓ Jobs & Skills: Labour Market Partnership
- ✓ Enhance productivity through investment in innovation and skills
- ✓ Grow local business in sectors aligned to a 10 x Economy
- ✓ Support innovative businesses to grow & become more competitive
- ✓ Support digital transformation
- ✓ Improve socio-economic inclusion by promoting inclusive practices

Key milestones since last quarter

Jobs & Skills

610 people accessed Employment Academies in 23/24 with 88% of completers gaining employment 480 places have been allocated across 24/25. 220 people have availed of upskilling academies in non-traditional low paid jobs

Educational Inequalities

£24m has been allocated to the DE RAISE Programme over the next 2 years to address educational disadvantage and increase attainment

Sustainable & Economic Growth

The NI Enterprise Support Service launched as Go Succeed in November 2023 as the new go-to source for expert business advice led by Northern Ireland's eleven local councils.

Sustainable & Economic Growth

Significant investment has been secured in the 23/24 year via Invest NI's Access to Finance schemes- 20m target met and increased target to 100m

Sustainable & Economic Growth

A total of £230m of government investment has been secured for the 5 innovation centres above. In addition, £15m has been secured for the Digital Twin centre, based in Belfast

Key milestones to be achieved by next quarter

Jobs & Skills

Further developmental work with anchor employers and partners in relation to developing Inclusive Pathways to Good Employment

Educational Inequalities

Educational Inequalities task group to consider delivery of the action plan and the implementation of the RAISE programme in Belfast

Sustainable & Economic Growth

Consideration to the sub-regional economic approach and define linkage to the community planning structures in Belfast

Sustainable & Economic Growth

Continued delivery of BRCD, including Benefits Framework & Refresh of the BRCD Industrial Framework to commence

Sustainable & Economic Growth

Identification of a project that can be used as a demonstrator for testing the emerging co-design framework

Inclusive Pathways to Good Employment



The Belfast Agenda

Strategic plan

2024 - 2028

Priority: Inclusive Pathways to Good Employment



Identified by the **City Leadership Group** as a key priority



Paramount importance for the **City's future economic prospects** and for residents



The Labour Market Partnership strategic assessment identified **record levels of economic inactivity due to long-term sickness and disability** across NI. The aftermath of the Covid-19 pandemic, noted 55% of all inactive giving the reason as long-term illness.



Strong correlation between areas across NI (and Belfast) with no qualifications and high levels of economic inactivity.



Approx. **48,000 of those who are inactive (15% of the total) across NI would like to work**, pointing to the need for the best possible understanding of the barriers these people face and need to overcome to unlock their labour market potential.



Barriers to (re)entering the labour market are easy to identify.... **improving qualifications and skills are certainly a key step** to be taken but difficult to take without support to overcome other challenges such as employability, financial, housing, health-led and/or childcare.#



A challenge which has multiple negative impacts, for individuals and for the economy, and is **a cycle that the Belfast Agenda should be determined to break.**



Belfast
City Council



Strengthening partnership delivery

Strengthening collaboration in employability and skills delivery arrangements at local area and neighbourhood level,

Targeted work with public and private sector partners **to secure routes to relevant skills** and well paid and sustainable work.

Develop a **‘proof of concept’ for employers**, that pivoting towards a pool of people who would otherwise not be recruited can operate as a solution to recruitment gaps.

Next Steps

1. Secure senior leadership level commitment from key sponsor partners
2. Define the need in terms of recruitment for BHSCT
3. Scope out in detail what a partnership delivery approach might look like
4. Convene wider partners to consider how they can play a role in wraparound support work in communities



The Belfast Agenda

Our Place Board

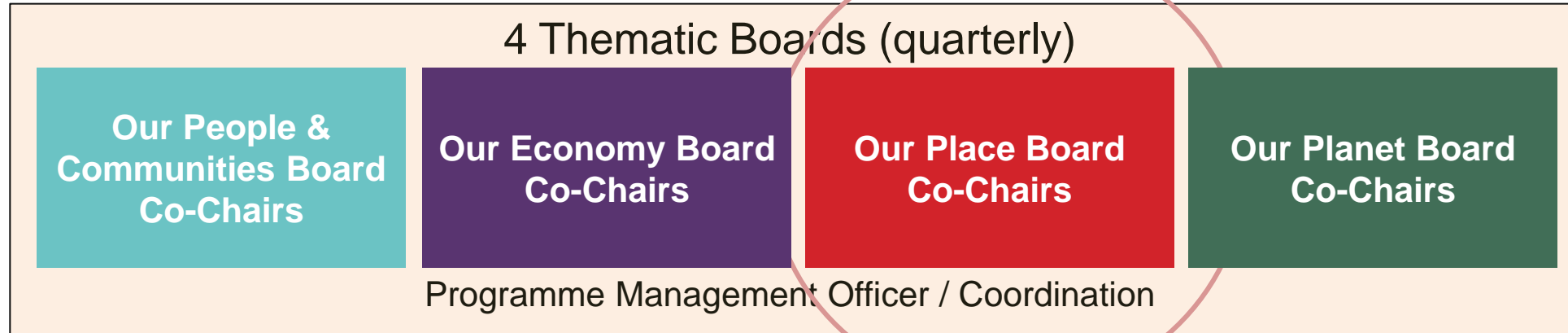
Damien Martin



Community Planning Partnership

Strategic Partnership, meets bi-annually

- Standing agenda item for discussion / assurance
- Point of escalation through Co-Chairs & PMO





Key Workstreams

- ✓ Increase housing supply across all tenures
- ✓ Prevention of homelessness
- ✓ Improve energy efficiency in social housing through retrofit
- ✓ Deliver the LDP
- ✓ Deliver the Eastern Transport Plan
- ✓ Support sustainable travel
- ✓ Support modal transport change (walking, wheeling & cycling)
- ✓ Promote and position the city to compete
- ✓ Transform the city centre into a people-focussed destination
- ✓ Attract more visitors who stay longer and spend more in local economy

Key milestones since last Quarter

Housing-Led
Regeneration

On-going joint Public Sector Strategic Sites Assessment on NIHE / DfC / BCC land completed

Housing-Led
Regeneration

Homes on Upper Spaces for Everyone (H.O.U.S.E) EoI closed on 25th October; this process will help determine the level of interest to bring forward current upper floor spaces for residential use and the enablers required to do this

Housing-Led
Regeneration

Improve energy efficiency through retrofit – ERDF funding completed with target of 745 retrofit homes achieved

Connectivity,
Active &
Sustainable
Travel (CAST)

Phased opening of Belfast Grand Central Station

Future City
Centre

Vacant to Vibrant City Centre Capital grant scheme

Key milestones to be achieved by next quarter

Housing-Led
Regeneration

Work to progress routes to delivery of sites identified within the Public Sector Strategic Site Review

Housing-Led
Regeneration

Progressing agreement of a collaborative approach to placemaking across statutory partners

Connectivity,
Active and
Sustainable
Travel

Eastern Transport Plan draft background chapters and Belfast City Centre Chapter are nearing completion

Future City
Centre

Streamlining governance arrangements and focus for the City Centre

Future City
Centre & Wider
Regeneration &
Investment

Vacant to Vibrant Scheme to be launched citywide

Housing Led Regeneration Fiona McGrath and Cathy Reynolds



The Belfast Agenda

Strategic plan

2024 - 2028

Housing-Led Regeneration



Belfast Agenda – strategic context

- Increase population by **66,000** people
- Reduce the waiting list for **social homes**
- Increase housing supply across all tenure types
- By 2035 deliver **31,600** new homes with **8,000 units** within city centre (as per LDP growth targets)
- Transition Belfast to an **inclusive, low carbon climate resilient economy**
- Housing is an **equivocal lever for economic development**

Terms of Reference:

HLRG is the delivery group and agreed mechanism for bringing forward Housing Led Regeneration

The immediate task of the Group was public sector site identification across the city with the following key purpose:

- To **support integrated planning and greater collaboration** across partners
- Identifying potential **strategic private sector land opportunities**,
- To explore mechanisms to **establish partnerships** for development of homes and ways of investing in housing throughout the city,
- **Identifying barriers** to delivery and potential solutions.
- To consider how to **maximise the wider regeneration benefits, connectivity and place making**.
- Contribute to realising the ambitions and opportunities in the **Belfast Agenda**

Key areas of focus for HLRG

Increase the provision of Affordable Housing

- ✓ Delivery social housing development programme with 1,756 social housing units under construction
- ✓ Innovation Lab report – address issues and barriers
- ✓ Housing Executive New Build Pilot at Sunningdale
- ✓ Affordable Housing Policy adopted

Prevention of homelessness

- ✓ On-going delivery of Ending Homelessness Together Strategy
- ✓ Complex Lives (Our People & Communities)

Improve energy efficiency in social housing through retrofit

- ✓ Target of 745 retrofitted homes achieved through ERDF

Key areas of focus for HLRG

Increase housing supply across all tenures

- ✓ Progression of identification and Assessment of Public Sector land for housing
- ✓ Identification of issues and barriers to development, particularly around strategic sites
- ✓ Procurement to appoint Partners for delivering HLR (private sector and Housing Association)
- ✓ DFC competition for operator to deliver Intermediate Rent Housing Scheme underway
- ✓ Call for sites exercise via LDP

Key Workstreams for HLRG

Increase the city centre residential population

- ✓ A number of mixed tenure planning approvals recently granted
- ✓ BCC/DfC/NIHE: a number of city centre sites being brought forward for delivery for Housing Led Regeneration
- ✓ Loftlines first mixed tenure scheme underway and social housing development scheme progressing adjacent Markets area
- ✓ H.O.U.S.E
- ✓ NIHE City Centre Advisory Group established to consider issues and opportunities for higher density mixed-tenure developments
- ✓ BCCRIS stocktake and Place Based Growth Proposition: funding and viability challenges remain a critical issue

Adopt a placemaking approach

- ✓ Development of HLRG placemaking approach including an evolving area-based approach

Challenges to increasing housing supply



Funding

Viability –
Land/Construction
Costs/Profitability

Provision of
supporting
infrastructure both
Soft and Hard

Mixed tenure
developments

City Centre
Opportunities
Family Living

Lack of specific
regeneration
funds in NI

10,497 social
housing applicants
in Housing Stress

Limited supply of
Public Sector land

5,252 placements
in Temporary
Accommodation

Demand from
Private rental and
sale sectors

Multiple agencies,
statutory powers
& city governance

The Belfast Agenda

Our Planet Board

Debbie Caldwell



Strategic Leadership Group

- Executive level representation of key partners which have statutory responsibility and resource decisions.
- Strategic oversight and point of escalation
- Meet quarterly (or as may be required)

Community Planning Partnership

Strategic Partnership, meets bi-annually

- Standing agenda item for discussion / assurance
- Point of escalation through Co-Chairs & PMO

4 Thematic Boards (quarterly)

Our People & Communities Board Co-Chairs

Our Economy Board Co-Chairs

Our Place Board Co-Chairs

Our Planet Board Co-Chairs

Programme Management Officer / Coordination

Strategic Areas of Focus

Re-naturing the city and increasing resilience to climate change

Creating a sustainable circular economy

Innovating to Net Zero



Key Workstreams

- ✓ Increase the number of trees across the city
- ✓ Protect & enhance local environment and natural ecosystem
- ✓ Promote the uptake of nature-based solutions
- ✓ Promote sustainable circular economy approaches
- ✓ Promote a just transition to net zero in Belfast
- ✓ Increase use of electric vehicles & improve access to car charging
- ✓ Reduce energy consumption of housing & public buildings
- ✓ Enable sustainable food practices & partnerships
- ✓ Decarbonise the heat supply to buildings in the city
- ✓ Enable the city to decarbonise at scale
- ✓ Support local energy projects
- ✓ Create a net-zero tech park in the Harbour Estate
- ✓ Accelerate transition to low carbon manufacturing
- ✓ Support green multi-modal mobility

Key milestones achieved

Re-naturing the city and increasing resilience to climate change

74ha of trees and 2761m of hedgerow planted across Belfast and nature-based solutions demonstrator site and agro-ecological garden established at Botanic gardens through the UPSURGE project with ongoing environmental monitoring

Creating a Sustainable Circular Economy

Framework for a Net Zero neighbourhood being developed by the UP2030 project focusing on retrofit, greening and active travel in Linen quarter BID, Sandy Row, Market, Donegall Pass and Barrack Street

Creating a Sustainable Circular Economy

Heat mapping study underway for a heat network, energy audits for 4 high energy consuming buildings completed and first preparatory study and workshops completed through the Belfast Retrofit Hub to support the design of a neighbourhood retrofit pilot

Creating a Sustainable Circular Economy

Bronze accreditation achieved under Sustainable Food Places, Community Growing Forum and Food Access working group established by the Belfast Sustainable Food Partnership

Innovating to Net Zero

Belfast Local Area Energy Plan launched, Net Zero Delivery group established and Innovate UK funded project underway to de-risk the development of a city centre heat network and a large-scale solar PV project

Key milestones to be achieved by next quarter

Re-naturing the city and increasing resilience to climate change

Establish environmental monitoring at nature-based solutions demonstrator site in Botanic Gardens and complete capital works and start to deliver the operational plan

Creating a sustainable circular economy

Complete the draft framework for a Net Zero neighbourhood through the UP2030 project focusing on retrofit, greening and active travel in Linen quarter BID, Sandy Row, Market, Donegall Pass and Barrack Street

Creating a sustainable circular economy

Complete heat mapping and commence market engagement to test the market for a Heat Network for Belfast City Centre and further preparatory studies completed through the Belfast Retrofit Hub to support the design of a neighbourhood retrofit pilot

Creating a sustainable circular economy

Continue to develop an accessible platform to store and communicate climate data for the city and create an online tool that estimates rooftop solar PV potential in the UP2030 area of the City

Innovating to Net Zero

Complete market readiness assessment and business model development for a heat network and large-scale solar PV project through the Innovate UK funded project and continue to develop the project pipeline from the Belfast Local Area Energy Plan through the Belfast Net Zero Delivery Group



Local Area Energy Plan

Debbie Caldwell

Climate Commissioner, Belfast City Council

CaldwellD@belfastcity.gov.uk



Belfast
City Council





Data Group

BCC UU NISRA QUB Danske Bank SONI DFE EANI
Belfast Harbour RSUA

Delivery Group

BCC NIE SONI Phoenix Energy NIHE QUB
Action Renewables RSUA



Belfast
City Council



Decarbonising the City.....

Belfast's Energy System Today

63%

of energy
consumed in
Belfast is from gas



ENERGY

Belfast's metered energy consumption is 63% from gas and 37% from electricity.

There are currently 1,311 domestic solar PV installations across Belfast contributing a total of 8.6 MW of renewable electricity to the local supply.

63%

of dwellings EPC
rated D – G

BUILDINGS

Currently 35% of Belfast's existing domestic buildings are EPC rated D with 18% rated E, 8% rated F, and 2% rated G. These require energy efficiency improvements.

12 million square metres of public, commercial, and industrial floorspace to be decarbonised by 2050.

95%

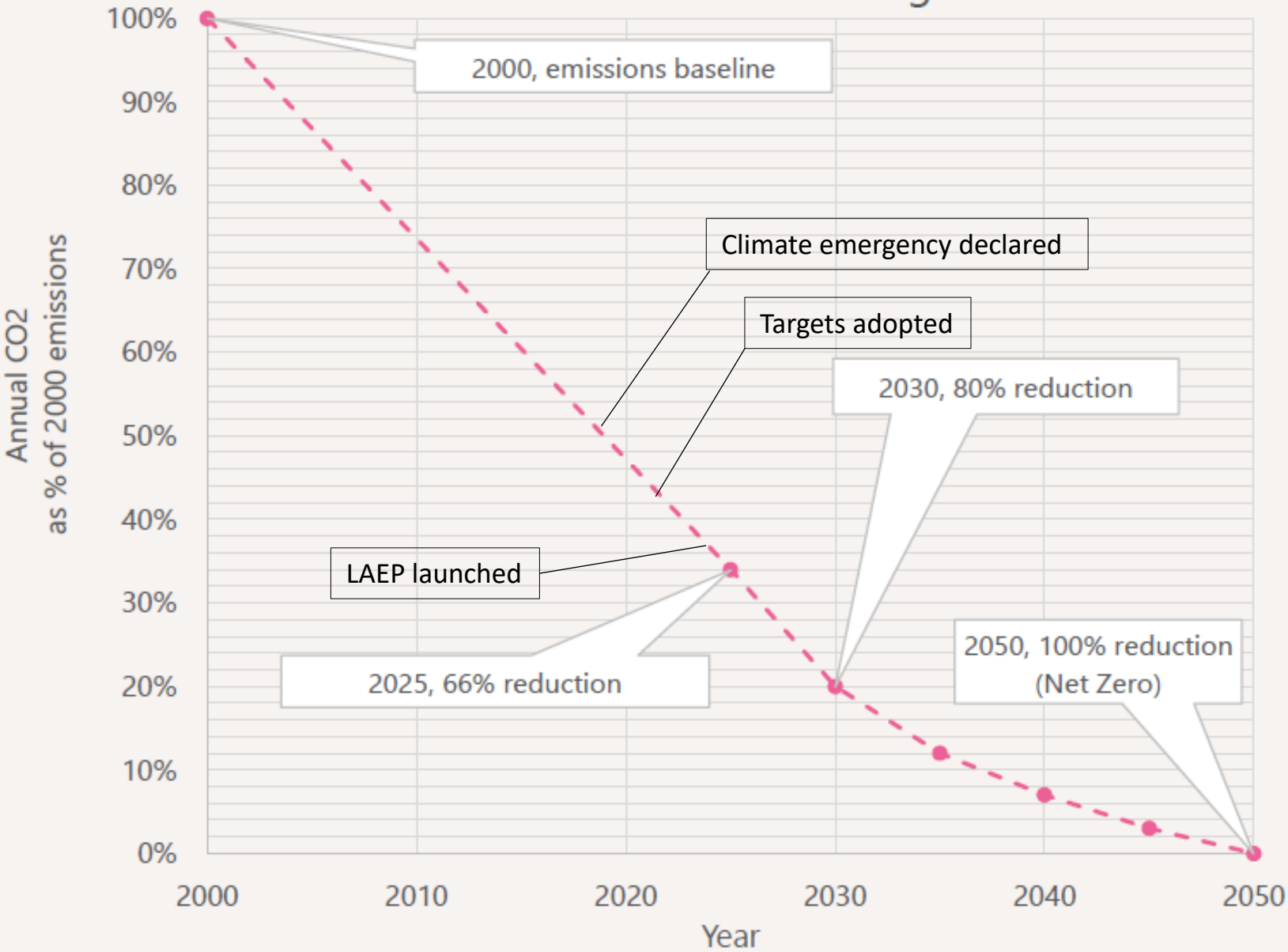
of heating is fossil
fuel based

HEATING

66% of buildings currently use gas for heating with 29% using oil.

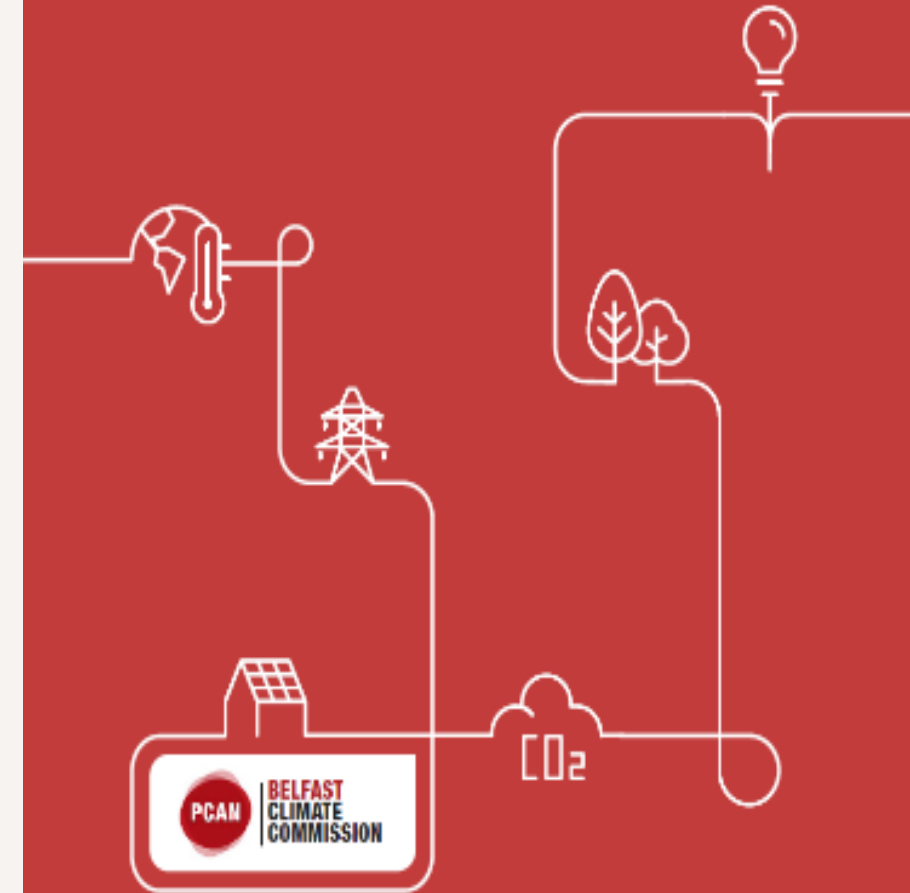
There are small quantities (<5%) of buildings electric heating, solid fuel or biomass heating.

Belfast's Emissions Targets



A NET-ZERO CARBON ROADMAP FOR BELFAST

Andy Coulson, Andrew Sudmant, Jessica Boyd, Robert Fraser Williamson, John Barry & Amanda Slevin





Retrofit



District heat networks



Priority decarbonisation projects

Cost £16,600m
£970m more than BAU

Jobs - 500FTEs
£150m monetizable health benefits
'Onshore' £400m pa



Households on oil transition to low carbon heating



Solar car port with EV charging



Rooftop solar PV

Challenges

- Scale and pace of change required
- Incentivising people to improve energy efficiency of buildings
- Cost of electricity
- Grid capacity
- Supply chain capacity
- Supply chain security



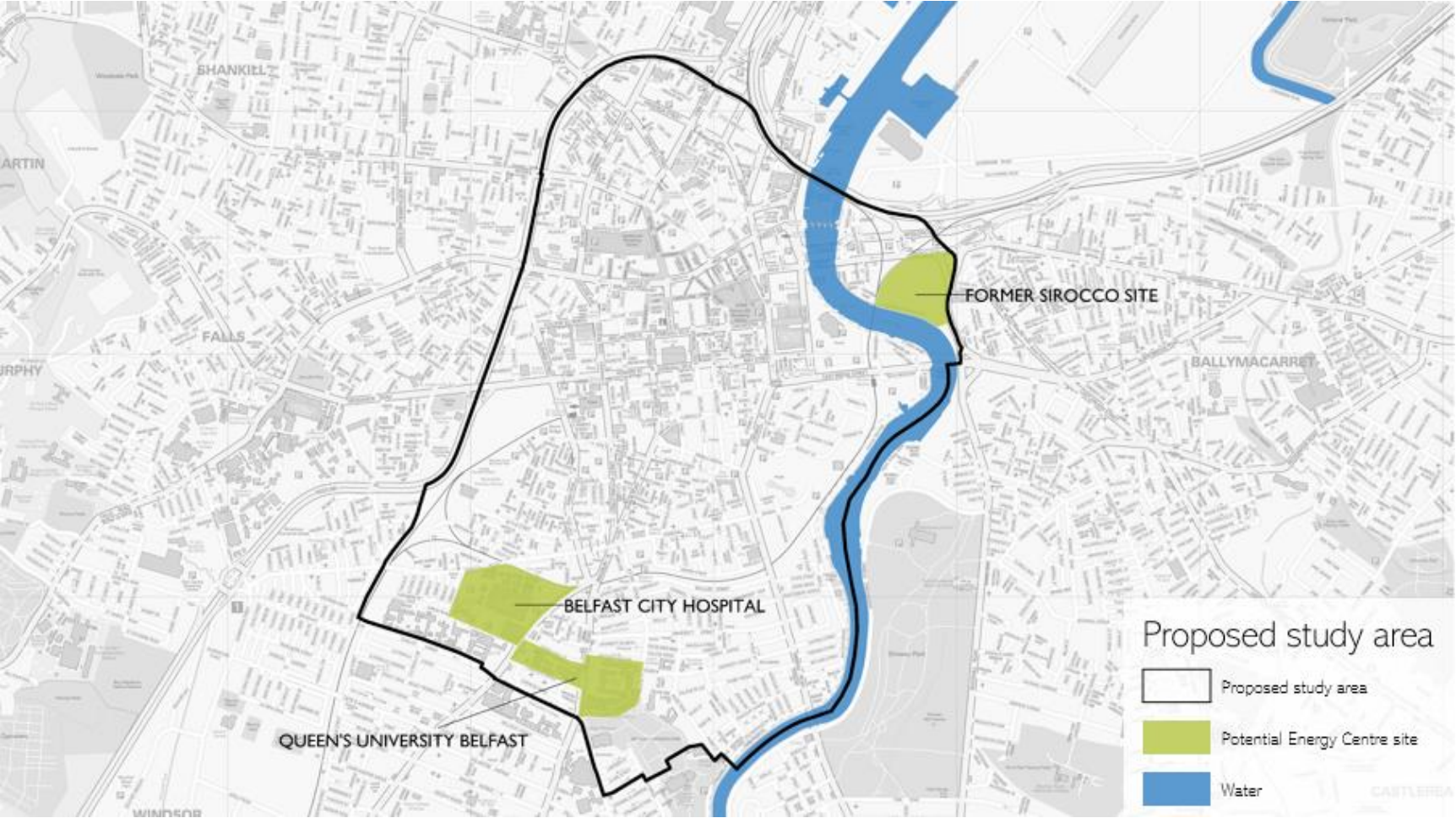
Belfast
City Council



Using public procurement to drive decarbonisation.....



Target area for a heat network



A city centre network could be one of several around the city



Phase 1: use base loads in the public sector to incentivise initial investment.....



Phase 2: scale out to include residential



Ongoing work – heat network



- Heat map – Feb 25
- Identifying the best approach to bring a heat network to market
- Market readiness assessment
- Opportunities assessment for upskilling and empowering local communities
- Assessment of economic, environmental and social impacts



Belfast
City Council



4.1. Review of VCSE Sectoral Advisory Panel

**John Tully, Director of City & Organisational Strategy
Belfast City Council**

Review of VCSE Sectoral Advisory Panel

- 1 Chair** - recognise the significant contribution and important role of the Chair as well as the level of commitment and time required.
- 2 Membership** – any future Panel should be of a sufficient scale (e.g. 15 to a possible maximum of 30) to create the capacity to link with and input into all strands of the refreshed Belfast Agenda (15 priorities). Important to ensure a balance across sectors, geographies and subject expertise.
- 3 Resourcing & Supporting Panel** - need for dedicated resources to enable and support the Panel to maximise its role within community planning.
- 4 Refreshed approach to partnership** - strengthened relationships between statutory partners and Panel. Shared commitment and focus on real co-design and co-production.

4.2. Co-design Framework

Irene Sherry, Chair of the VCSE Panel
and Rebekah McCabe, Involve

Co-design Framework

for Community Planning

Rebekah McCabe, INVOLVE



The Belfast Agenda

Strategic plan

2024 - 2028

Co-design: background



CPP recognised the importance of continually improving how it engages and involves. This commitment forms part of the foundations for success - 'Making it Happen' (Belfast Agenda)

- Spring 2023 - Co-design Steering Group created to explore how co-design principles could support the CPP's ambition for enhancing participation
- May 2023 - Involve & Community Places commissioned to help develop co-design framework
- June to Sept 2023 - Scoping, interviews and desk research
- Sept to Nov 2023 – 4 x participatory workshops to scope co-design and agree guiding principles
- Feb 2024 - Workshop to test the draft framework
- Mar to Jun 2024 – Steering Group finalises the draft framework
- Nov 2024 – CPP will be asked to adopt the framework (***pre-engagement with BA Boards***)

Phased approach



What is co-design?

Co-design is a participatory approach to developing solutions to challenges and involves bringing together 3 types of expertise:

- 1. 'lived or living'** experience of the challenge (or who will be impacted)
- 2. 'practice wisdom'** - people with professional experience of the issue
- 3. 'research evidence'** – specialist or academic experts and datasets

And is about:

- Exploring problems and solutions and learning together
- Respecting and treating each other as equal partners
- Engaging in a process, not a single or one-off event

Co-design Framework

The framework guides you through the process of doing co-design, from how to prepare before you start to how to evaluate throughout and at the end

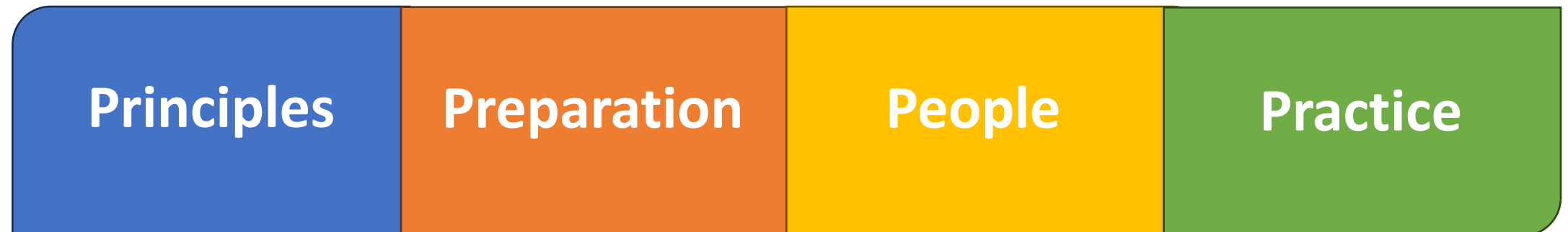
Co-design is not the same as public participation or public engagement (which are broader categories with a range of practices and methodologies).

Co-design is not needed, possible, or the right approach in every situation. It is ok not to do co-design, **but it is important not to say co-design is happening if it isn't.**

Co-design principles

1. Centring lived and living experience
2. Including minoritised voices
3. Welcoming a diversity of perspectives
4. Sharing of power

Building blocks of co-design...



Co-design Framework

The framework will help you:

1. Decide if co-design is the right approach
2. Apply the 4 co-design principles
3. Pay attention to the context and support co-designers to turn up ready
4. Understand who needs to collaborate in the process
5. Adopt the right mindsets for co-design
6. Develop a co-design brief together
7. Allow for learning and self reflection
8. Reflect as a co-design team on how the process worked



**Not everything
should or can be co-
designed**

Recommendations (consultants)



Involve and Community Places recommended that the CPP consider the following areas to help ensure co-design is properly mainstreamed and embedded.

- Sustainable, adequate resourcing
- A wider participation framework for co-design to sit within
- Co-design training
- Nurture relationships to build trust within the CPP
- Community of practice for co-design
- Capture and tell stories about what works
- Regularly review the framework as practice develops

Next Steps

- **Practice** – secure commitment to “test” using real issues
- **Embed** – co-design recommendations and wider engagement and collaboration
- **Influence** – explore opportunities and funding with DfC, TEO and other government departments
- **Promotion** – share with civic society, partners and other community planning partnerships (regional application).
- **Inclusive Growth Toolkit** - co-design framework referenced as a key resource to embed inclusive growth by empowering more marginalised groups in the design of projects, driving innovative solutions that are more likely to meet their needs.
- **Continuous review** – ongoing capacity building and improvement.

Testing the Co-design Toolkit

- Potential priority areas after initial discussions with the BA Boards:
 - **addressing poverty**
 - **a whole systems approach to obesity**
 - **health and work**
 - **climate related projects such as food sustainability, One Million Trees and climate adaptation**
- In taking forward any such pilots further consideration will need to be given to how the process would be resourced and supported.

Key Asks



- **Agree next steps to support and enhance the VCSE Panel**

NICVA have been commissioned to undertake an independently managed nomination and selection process.

Promote the nomination and selection process.

A strategic support contract will be commissioned to provide a secretariat and facilitative role to the panel.

- **Co-Design Framework**

Note the recommendations for embedding the framework and Promote the Co-Design Framework within own organisations.

Agree Boards to take forward emerging co-design pilot projects to test the Co-Design Framework.

- **Enabling Fund**

Consider allocating resources to a community planning enabling fund to progress innovative approaches and demonstrator projects.

5. Next Steps & Close

John Walsh, Chief Executive – Belfast City Council

2025 Forward Schedule

Thursday 10 April 2025, 2-4 pm

Thursday 06 November 2025, 2-4 pm

Feedback Survey

<https://forms.office.com/e/A7fMxmNTzH>



The Belfast Agenda

Thank You

